

Data sheet



I-NF-D & I-NF-D-SM: Interior non-fire & Smoke double acting doorset, single or pair

Our most popular double acting interior door set, the I-NF-D is available in singles or pairs. The door leaf is a solid composite timber core faced with an integral MDF layer (S-CORE). The standard door set is supplied sealer coated on both faces, as well as top and bottom, or you can specify a facing and/or kickplate.

- Leaf sizes up to 2700 high x 1200 wide per leaf
- Thickness 55 mm
- Weight 24.3 kg /m²
- Acoustic values are difficult to achieve with double acting doors as it is not possible to fit drop sill seals to the door bottoms

FACING OPTIONS

- Paint quality factory sealed
- 1 mm stainless steel kickplate to 1000 mm – both sides
- Others by application

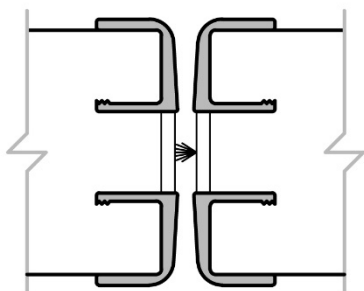
LEAF EDGE DETAILS

- NZFD Bullnose (Aluminium)

PAIR MEETING STYLES

Aluminium

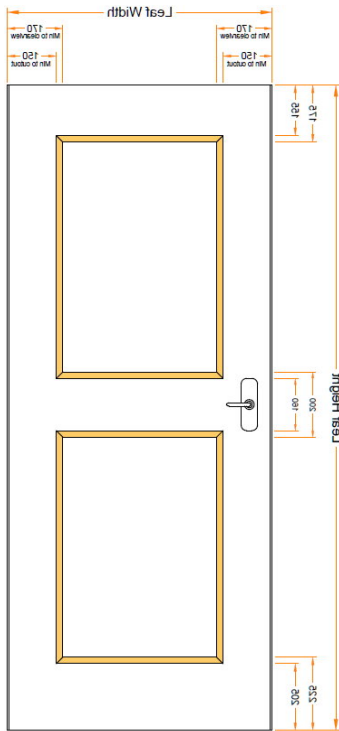
Bullnose C/C



GLAZING OPTIONS

All options use 10.38 mm laminated glass. In addition to the standard options shown below, we offer bespoke designs that are available on request from our sales team. The maximum panel size is subject to minimum clearances.

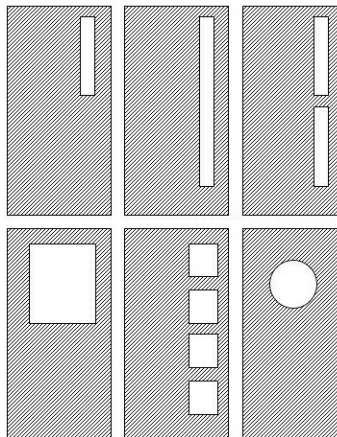
Placement dimensions



Glass types & size limitations

Rating	Glass	Max Height	Max Width	Max Area
NR	10.38	2520	880	1.932 m ²
-30/-	Plyo 12	2520	880	1.932 m ²
-30/30	Plyo 12	2520	880	1.932 m ²
-60/-	Plyo 12	1830	810	0.92 m ²
-60/30	Plyo 12	1830	810	0.92 m ²
-60/60	Plyo 12	820	100	0.082 m ²
-60/60	Plyo 23	1200	300	0.21 m ²
-60/60	Plyo 23	420	420	0.2 m ²
E-60/30	Plyo 12	814	204	0.11 m ²
-340/-	Ropax 6mm	600	100	0.06 m ²
-340/-	Ropax 6mm	220	120	0.11 m ²

Some possible design ideas

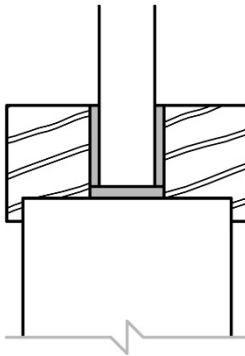


GLAZING BEAD OPTIONS

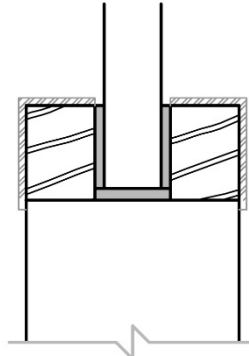
Square (standard)

- No additional charge
- Includes optional aluminium overcap

Square Bead with Lip



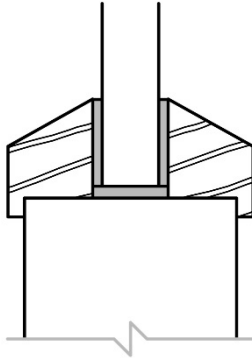
Aluminium Bead



Bevel (previous standard)

- Surcharge applies
- No aluminium cap option

Bevel Bead with Lip

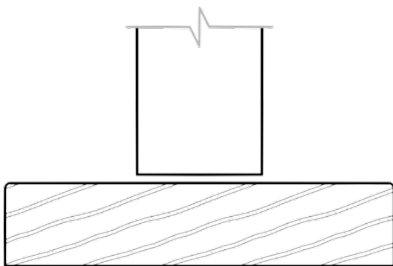


JAMB TYPES AND PROFILES

32 mm hardwood timber (types 1, 2 & 3)
or 1.6 mm electrogalv steel (type 8), paint quality or powdercoat options available

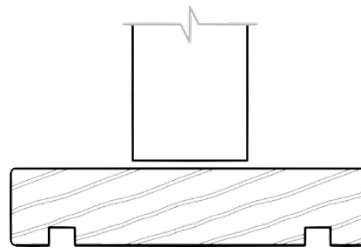
T1 – Timber

Timber flat for architrave



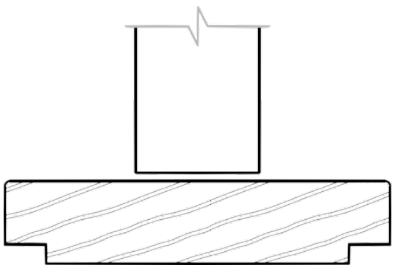
T2 – Timber

Groove for wall lining to suit (12mm reveals)



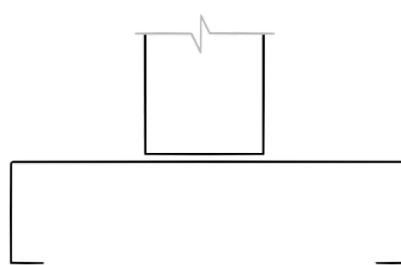
T3 – Timber

Rebate for wall lining to suit (non-standard surcharge may apply)



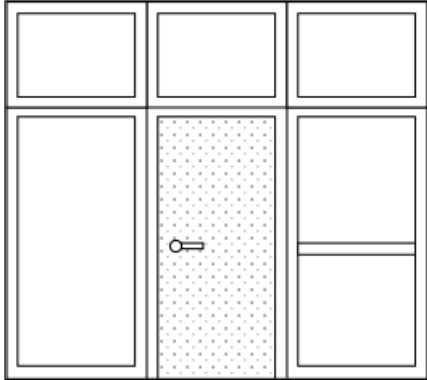
T8 – Steel

Steel



SIDELIGHTS AND OVERLIGHTS

The I-NF-D is available in a range of sidelight and overlight combinations that are generally made to order. If you require a sidelight or overlight, please contact a member of our sales team to discuss and confirm specific design and pricing details.



- Max overall combined height 3000 mm.
- Perimeter timber 32 mm and transom midrail 60 mm.
- No limit to overall width.
- Each module is limited by weight, transport and on site handling capabilities.
- Max door height 2200 mm
- Sidelights with optional mid rail – consider manifestation needs

APPROVED HARDWARE

Closers are already fitted, they are the pivot mechanism. We can supply these doors sets with or without hardware. With pre-cropped doors the hardware supplied will be unfitted. Any standard hardware is suitable for these non-fire door sets, but consider the suitability with double acting doors.