

# Data sheet



## I-NF-H & I-NF-H-SM: Interior non-fire & Smoke hinged doorset, single or pair

Our most popular non-fire hinged interior door set, I-NF-H & I-NF-H-SM are available in singles or pairs. The door leaf is a solid composite timber core faced with an integral MDF layer (S-CORE). The standard door set is supplied sealer coated on both faces, as well as top and bottom, or you can specify a facing and/or kickplate.

- Leaf sizes up to 2700 high x 1500 wide per leaf
- Thickness 38 mm
- Weight 19.76 kg /m<sup>2</sup>
- Acoustic singles and doubles STC 29 unglazed STC 30 glazed

### FACING OPTIONS

- Paint quality factory sealed
- Timber veneer full height
- High pressure laminate full height
- Sheet vinyl to 1000 mm
- 1 mm stainless steel kickplate to 1000 mm – both sides

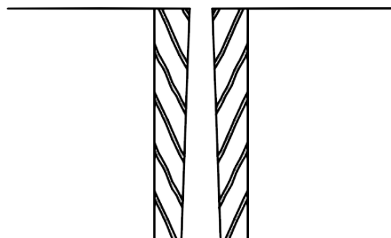
### LEAF EDGE DETAILS

- 7 mm pine clashing to hinge edge
- 7 mm pine clashing to leading edge of singles
- 18 mm pine clashing to leading edge of rebated pairs

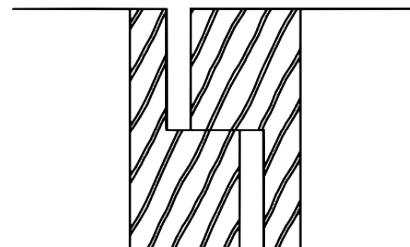
### PAIR MEETING STYLES

#### Timber (the standard option)

##### Flush

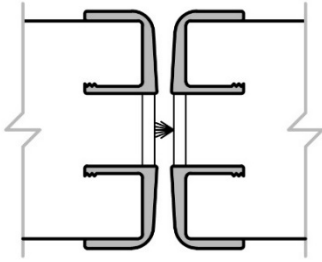


##### Rebated

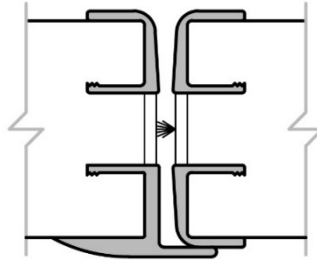


**Aluminium (surcharge applies)**

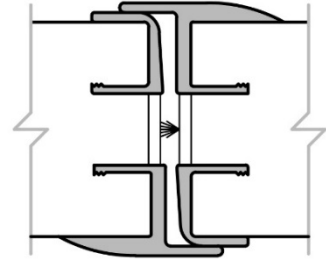
**Bullnose C/C**



**Bullnose C/J**



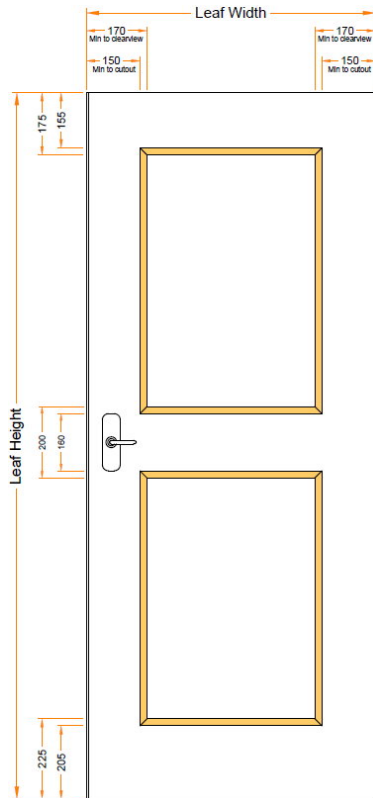
**Bullnose J/J**



**GLAZING OPTIONS**

All options use 10.38 mm laminated glass. In addition to the standard options shown below, we offer bespoke designs that are available on request from our sales team. The maximum panel size is subject to minimum clearances.

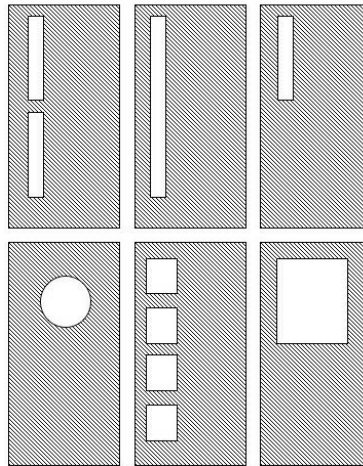
**Placement Dimensions**



**Glass Types & Size Limitations**

APPROVED GLASS & CLEARVIEW SIZES				
Rating	Glass	Max Height	Max Width	Max Area
NFR	10.38	2250	860	1.935 m <sup>2</sup>
-/30/-	Pyro 15	2250	860	1.935 m <sup>2</sup>
-/30/30	Pyro 15	2250	860	1.935 m <sup>2</sup>
-/60/-	Pyro 15	1830	610	0.92 m <sup>2</sup>
-/60/30	Pyro 15	1830	610	0.92 m <sup>2</sup>
-/60/60	Pyro 15	650	100	0.065 m <sup>2</sup>
-/60/60	Pyro 23	1700	300	0.51 m <sup>2</sup>
-/60/60	Pyro 23	450	450	0.2 m <sup>2</sup>
E-/60/30	Pyro 15	814	504	0.41 m <sup>2</sup>
-/240/30	Robax 6mm	600	100	0.06 m <sup>2</sup>
-/240/-	Robax 6mm	750	150	0.11 m <sup>2</sup>

**Some possible design idea's**

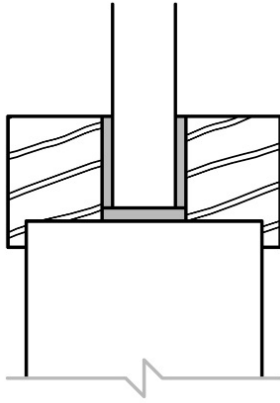


## GLAZING BEAD OPTIONS

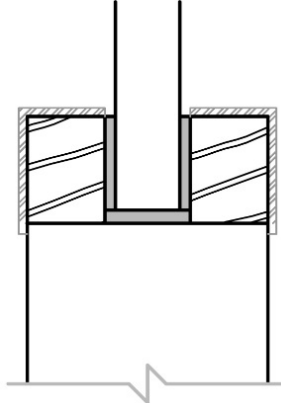
### Square (standard)

- No additional charge
- Includes optional aluminium overcap

#### Square Bead with Lip



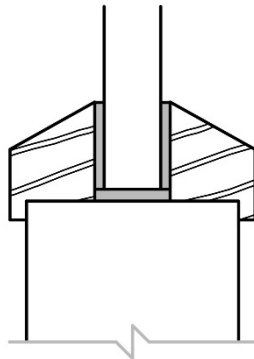
#### Aluminium Bead



### Bevel (previous standard)

- Surcharge applies
- No aluminium cap option

#### Bevel Bead with Lip

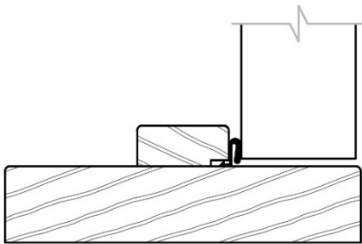


## JAMB TYPES AND PROFILES

32 mm hardwood timber (types 1, 2 & 3) width 77 – 350mm, planted stops ( 30 x 12), full width available at extra cost or 1.6 mm electrogalv steel (types 5, 6, 7 & Speedwall), paint quality or powdercoat options available

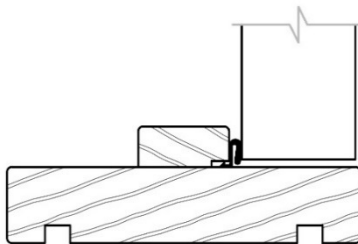
### T1 – Timber

*Timber width for architrave*



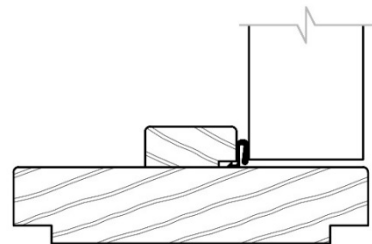
### T2 – Timber

*Groove for wall lining to suit (12mm reveals)*



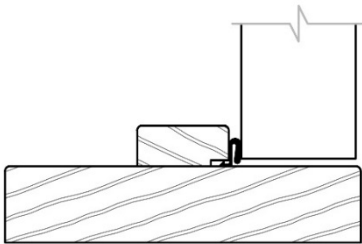
### T3 – Timber

*Rebate for wall lining to suit (non-standard surcharge may apply)*



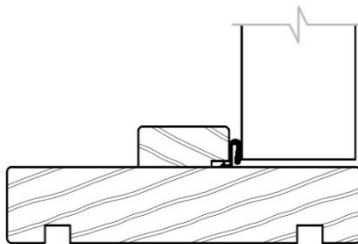
### T5 – Steel

*Steel width 102 – 350mm*



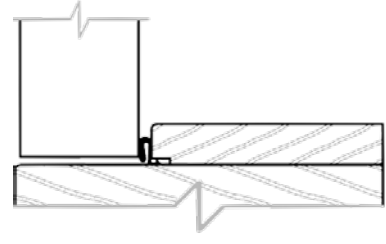
### T6 - Steel

*Steel with 137 – 203mm*



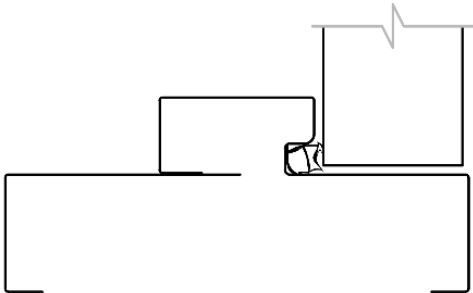
### Timber – Full width planted stop

*Available for all timber profiles (non – standard surcharge applies)*



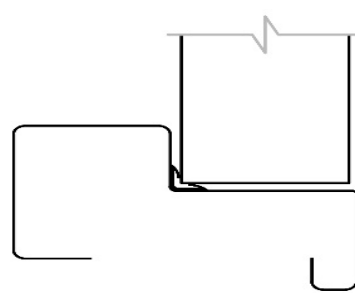
### T7 – two piece split steel

*Ideal for retrofit situations. No additional charge. Min 104mm if masonry wall, Min 112mm if stud wall – no max..*



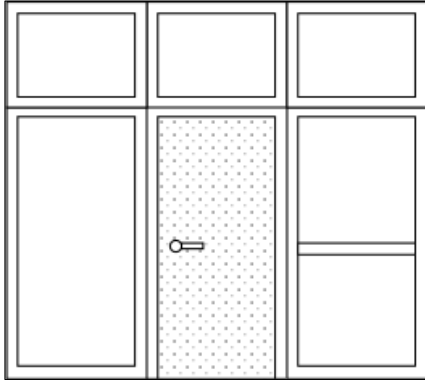
### Steel Speedwall

*Requires speedwall C track*



## SIDELIGHTS AND OVERLIGHTS

The I-NF-H is available in a range of sidelight and overlight combinations that are generally made to order. If you require a sidelight or overlight, please contact a member of our sales team to discuss and confirm specific design and pricing details.



- Max overall combined height 3000 mm
- 32 mm timbers throughout.
- No limit to overall width.
- Each module is limited by weight, transport and on site handling capabilities.
- Max door height 2700 mm
- Sidelights with optional mid rail – consider manifestation needs

## APPROVED HARDWARE

We can supply these doorsets with or without hardware. With pre-cropped doors the hardware supplied will be unfitted. Any standard hardware is suitable for these non-fire door sets.