

Data sheet



E-NF-L: Exterior non-fire door leaf (only), single or pair

Our most popular hinged exterior door leaf, the E-NF-L is available in singles or pairs. It has a solid laminated veneer lumber (LVL) core faced with marine grade plywood (P-CORE). The standard door leaf is supplied sealer coated on all six sides or you can specify a facing and/or kickplate. There is also an optional range of glazing formats or bespoke designs.

- Leaf sizes up to 2440 high x 1220 wide per leaf
- Thickness 44 mm
- Weight 20 kg /m²

FACING OPTIONS

- Paint quality factory sealed
- 1 mm galvanised steel facings with aluminium edge capping
- 1 mm stainless steel kickplate to 1000 mm – interior side

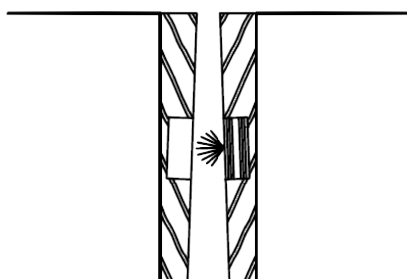
LEAF EDGE DETAILS

- 7 mm hardwood clashing to hinge edge
- 7 mm hardwood clashing to leading edge of singles & flush pairs
- 18 mm hardwood clashing to leading edge of rebated pairs

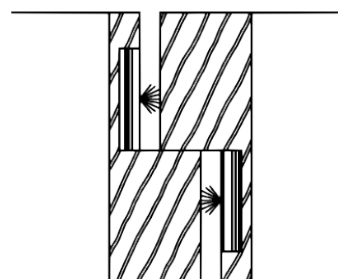
PAIR MEETING STYLES

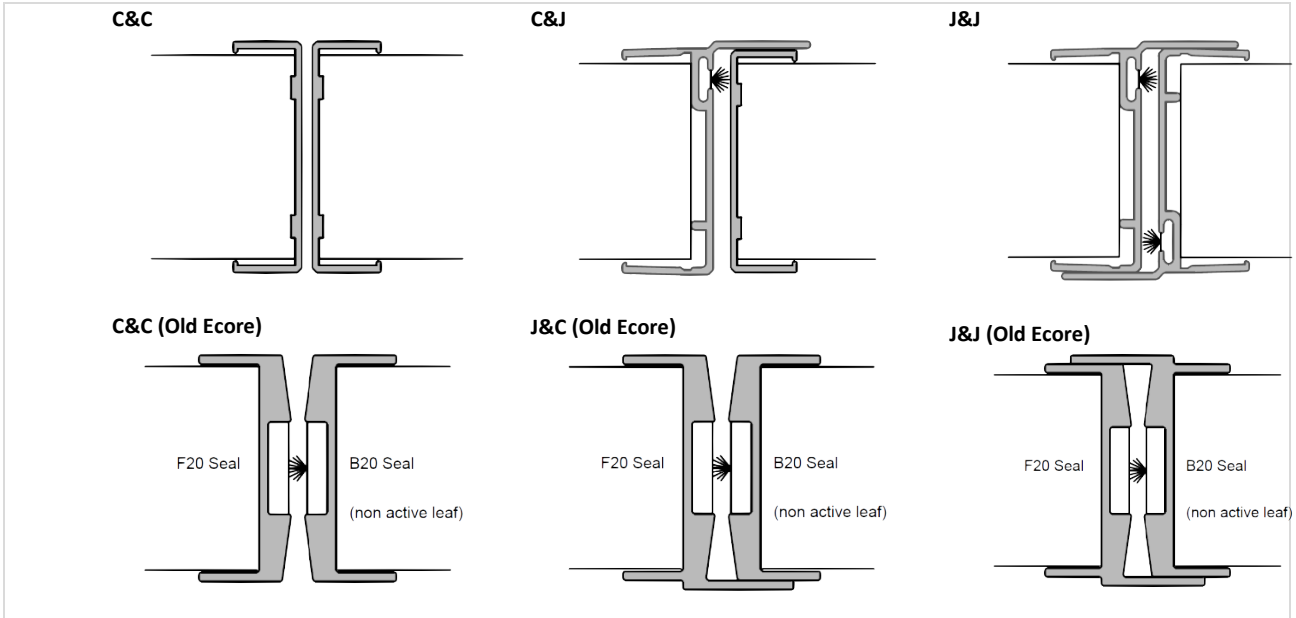
Timber (the standard option)

Flush



Rebated

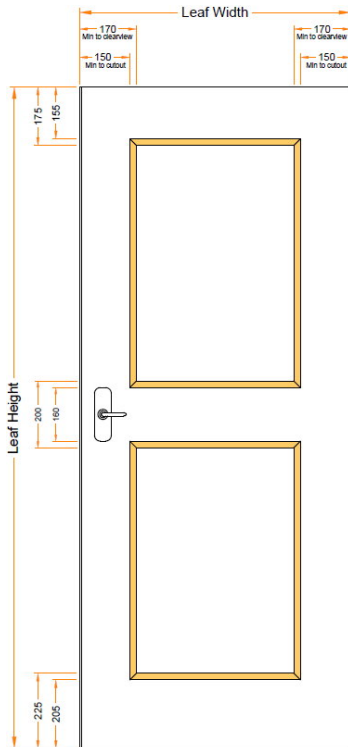




GLAZING OPTIONS

All options use 10.38 mm laminated glass. In addition to the standard options shown below, we offer bespoke designs that are available on request from our sales team. The maximum panel size is subject to minimum clearances.

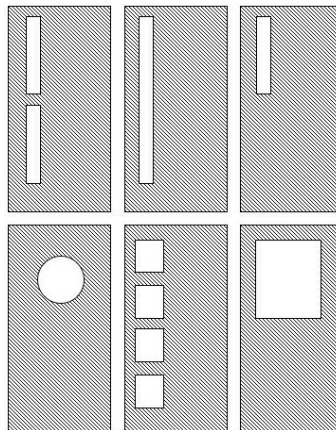
Placement dimensions



Glass types & size limitations

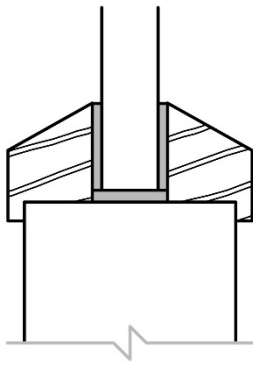
APPROVED GLASS & CLEARVIEW SIZES				
Rating	Glass	Max Height	Max Width	Max Area
NFR	10.38	2250	860	1.935 m ²
-/30/-	Pyro 15	2250	860	1.935 m ²
-/30/30	Pyro 15	2250	860	1.935 m ²
-/60/-	Pyro 15	1830	610	0.92 m ²
-/60/30	Pyro 15	1830	610	0.92 m ²
-/60/60	Pyro 15	650	100	0.065 m ²
-/60/60	Pyro 23	1700	300	0.51 m ²
-/60/60	Pyro 23	450	450	0.2 m ²
E-/60/30	Pyro 15	814	504	0.41 m ²
-/240/30	Robax 6mm	600	100	0.06 m ²
-/240/-	Robax 6mm	750	150	0.11 m ²

Some possible design idea's



GLAZING BEAD OPTIONS

Bevel Bead with Lip (for weathering)



HARDWARE

We can supply these units with or without hardware. With pre-cropped doors any hardware supplied will be unfitted. Any standard hardware is suitable for these non-fire door units.