

# Data sheet



## I-60-H: Interior 60 minute FRR hinged doorset, single or pair

Our most popular 60 minute FRR interior fire, smoke and acoustic door set, the I-60-H is available in singles or pairs. The door leaf is a solid composite timber core faced with an integral MDF layer (S-CORE). The standard door set is supplied sealer coated on both faces or you can specify a facing and/or kickplate.

- Leaf sizes up to 2700 high x 1200 wide per leaf
- Thickness 55 mm
- Weight 28.2 kg /m<sup>2</sup>
- Acoustic singles and doubles STC 34

### FACING OPTIONS

- Paint quality factory sealed
- Timber veneer full height
- High pressure laminate partial or full height
- Sheet vinyl to 1000 mm
- 1 mm stainless steel kickplate to 1000 mm – both sides

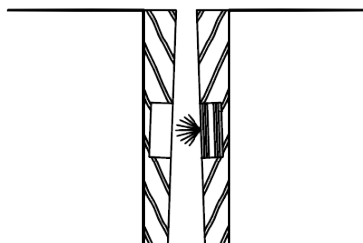
### LEAF EDGE DETAILS

- 7mm hardwood clashing to hinge edge
- 7mm hardwood clashing to leading edge (flush pairs & singles)
- 18mm hardwood clashing to leading edge of rebated pairs
- Bullnose (Ali)

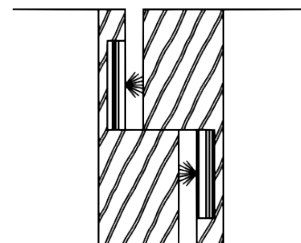
### PAIR MEETING STYLES

#### Timber (the standard option)

*Flush*

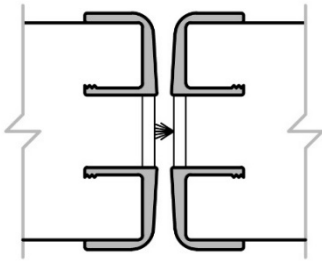


*Rebated*

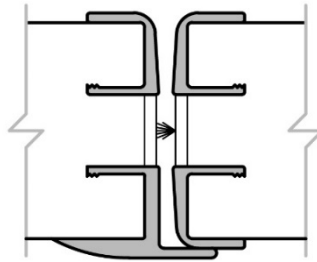


**Aluminium (surcharge applies)**

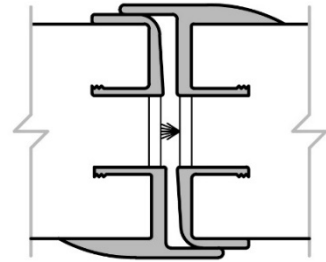
*Bullnose C/C*



*Bullnose C/J*



*Bullnose J/J*

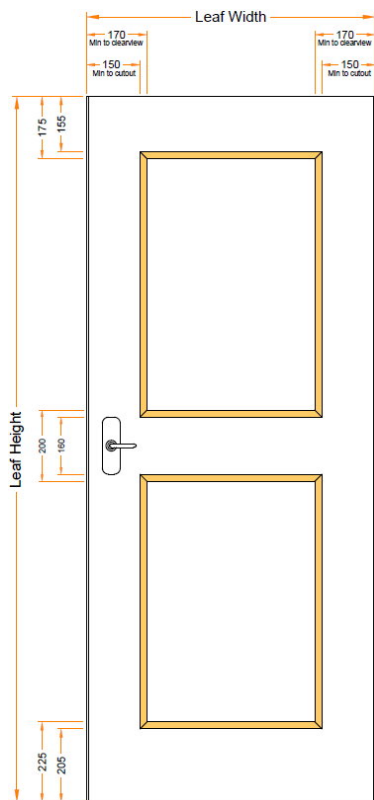


**GLAZING OPTIONS**

Pyro 15 or 23 mm fire glass is used for all options. In addition to the standard options shown below, we offer bespoke designs that are available on request from our sales team. The maximum glazed area's are detailed below, subject to minimum clearances.

Section 4.16.1 of NZ Building Code Acceptable Solutions defines the maximum integrity ratings for openings in fire and smoke separations as -/60/30 across all seven Purpose Groups. For large area vision panels in doors, and for overlights and sidelights, specifying the glass at -/60/30 will reduce the weight and cost of your door or door and sidelight unit. Call our Sales Team for more information on (09) 579-8895

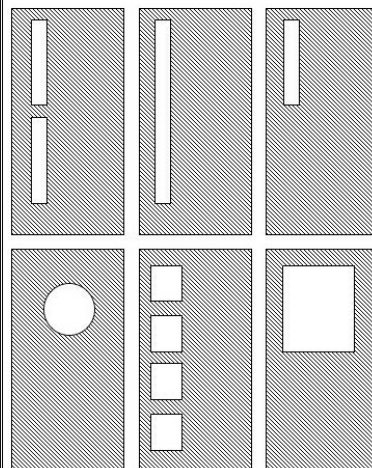
**Placement dimensions**



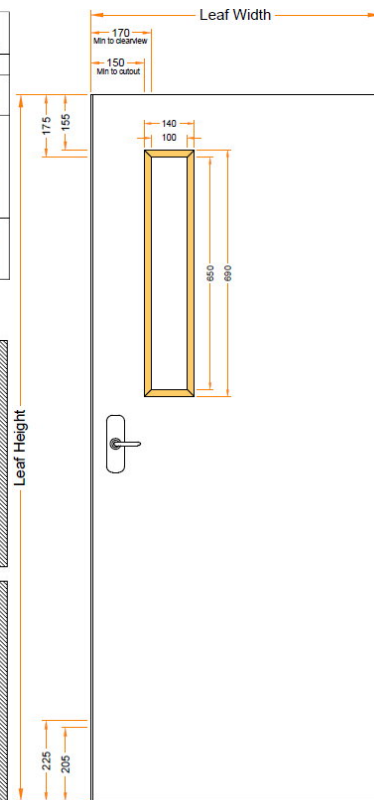
**Glass Types & size limitations**

APPROVED GLASS & CLEARVIEW SIZES				
Rating	Glass	Max Height	Max Width	Max Area
NFR	10.38	2250	860	1.935 m <sup>2</sup>
-/30/-	Pyro 15	2250	860	1.935 m <sup>2</sup>
-/30/30	Pyro 15	2250	860	1.935 m <sup>2</sup>
-/60/-	Pyro 15	1830	610	0.92 m <sup>2</sup>
-/60/30	Pyro 15	1830	610	0.92 m <sup>2</sup>
-/60/60	Pyro 15	650	100	0.065 m <sup>2</sup>
-/60/60	Pyro 23	1700	300	0.51 m <sup>2</sup>
-/60/60	Pyro 23	450	450	0.2 m <sup>2</sup>
E-/60/30	Pyro 15	814	504	0.41 m <sup>2</sup>
-/240/30	Robax 6mm	600	100	0.06 m <sup>2</sup>
-/240/-	Robax 6mm	750	150	0.11 m <sup>2</sup>

**Some possible design idea's**



**Gun slot design (most economical)**

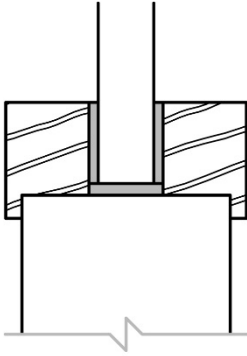


## GLAZING BEAD OPTIONS

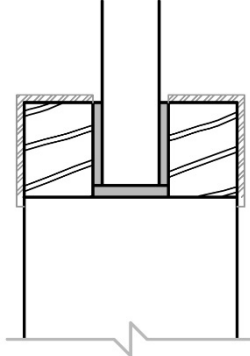
### Square (standard)

- No additional charge
- Includes optional aluminium overcap

*Square Bead with Lip*



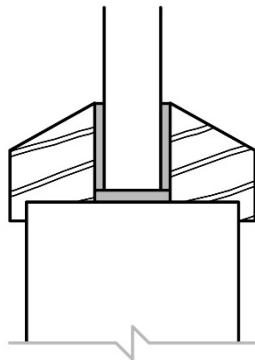
*Aluminium bead*



### Bevel (previous standard)

- Optional
- No aluminium cap option

*Bevel Bead with Lip*

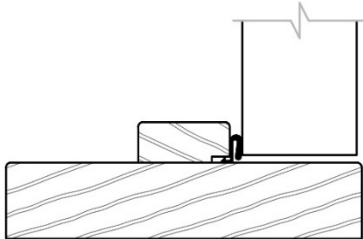


## JAMB TYPES AND PROFILES

32 mm hardwood timber (types 1, 2 & 3), width 92 – 350mm, planted stops (30 x 12), full width available at extra cost or 1.6 mm electrogalv steel (types 5, 6, 7 & Speedwall), paint quality or powdercoat options available

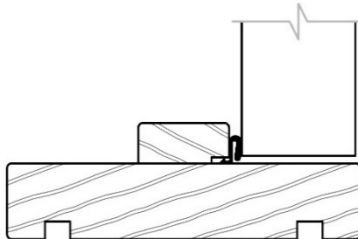
### **T1 – Timber**

*Timber flat for architrave*



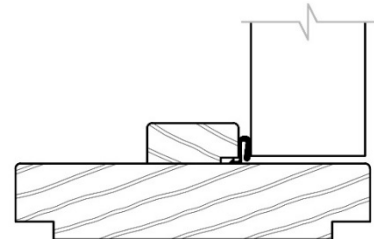
### **T2 – Timber**

*Groove for wall lining to suit (12mm reveals)*



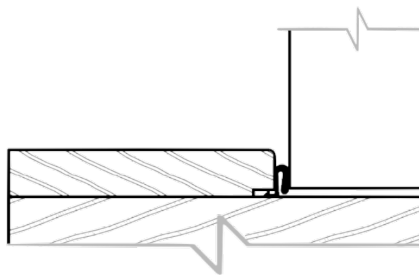
### **T3 – Timber**

*Rebate for wall lining to suit (non-standard surcharge may apply)*



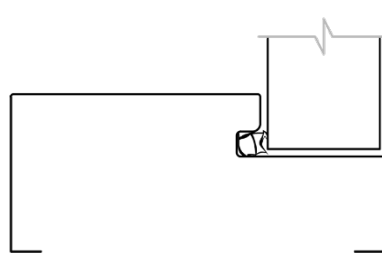
### **Timber – Full width planted stop**

*Available for all timber profiles (non – standard surcharge applies)*



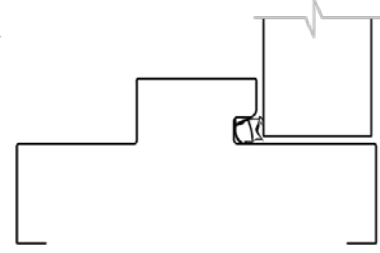
### **T5 – Steel**

*Steel width 117 – 350mm*



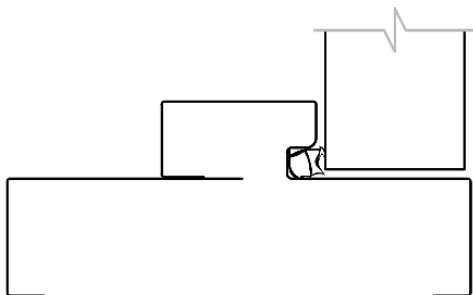
### **T6 – Steel**

*Steel width 152 – 203mm*



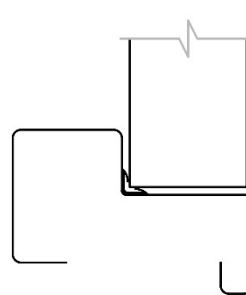
### **T7 – two piece split steel**

*Ideal for retrofit situations. No additional charge. Min 104mm if masonry wall, Min 112mm if stud wall – no max.*



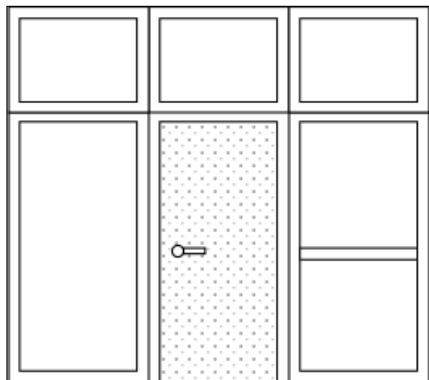
### **Steel Speedwall**

*Requires speedwall C track (80mm end cap)*



## SIDELIGHTS AND OVERLIGHTS

The I-60-H is available in a range of sidelight and overlight combinations that are generally made to order. If you require a sidelight or overlight, please contact a member of our sales team to discuss and confirm specific design and pricing details.



- Max overall combined height 3000 mm.
- Perimeter timber 45 mm and transom midrail 60 mm.
- No limit to overall width.
- Each module is limited by weight, transport and on site handling capabilities.
- Max door height 2700 mm.
- Sidelights with optional mid rail – consider manifestation needs.

## APPROVED HARDWARE

The minimum requirement is for a fire door to be self-closing and self-latching. Hardware must be selected from NZ Fire Doors' Approved Hardware list from the column '60 min'. Fitting any hardware that inhibits self-closing or self-latching is not approved by NZS 4520

**IMPORTANT:** Fitting untested or inappropriate hardware may affect the performance of the door and will void the warranty.