

# Data sheet



## I-NF-L: Interior non-fire door leaf (only), single or pair

Our most popular non-fire interior door leaf, the I-NF-L is available in singles or pairs. It has a solid composite timber core faced with an integral MDF layer (S-CORE). The standard door leaf is supplied sealer coated on both faces, as well as top and bottom, or you can specify a facing and/or kickplate. There is also an optional range of glazing formats or bespoke designs.

- Leaf sizes up to 2700 high x 1500 wide per leaf
- Thickness 38 mm
- Weight 19.76 kg /m<sup>2</sup>

### FACING OPTIONS

- Paint quality factory sealed
- Timber veneer full height
- High pressure laminate full height
- Sheet vinyl to 1000 mm
- 1 mm galvanised steel facings to 1000 mm with aluminium edge capping full height
- 1 mm stainless steel kickplate to 1000 mm – both sides
- Other options on application

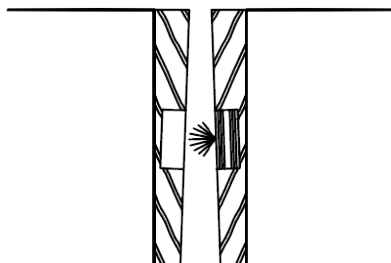
### LEAF EDGE DETAILS

- 7 mm pine clashing to hinge edge
- 7 mm pine clashing to leading edge of singles & flush pairs
- 18 mm pine clashing to leading edge of rebated pairs

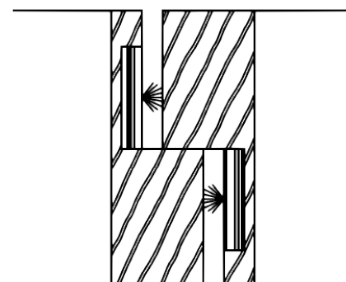
### PAIR MEETING STYLES

#### Timber (the standard option)

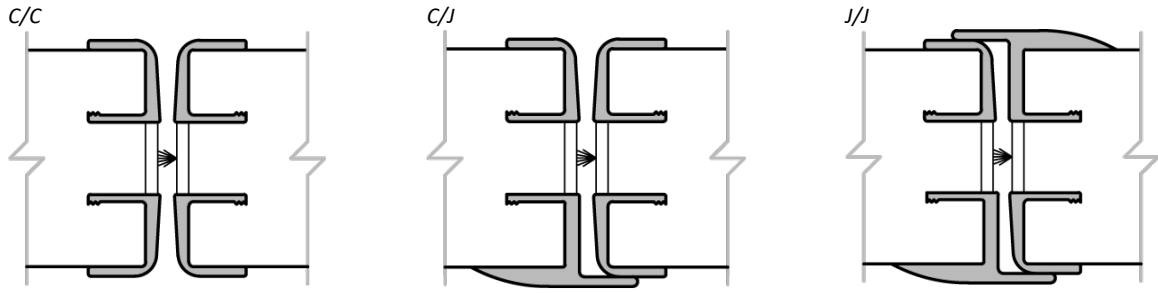
*Flush*



*Rebated*



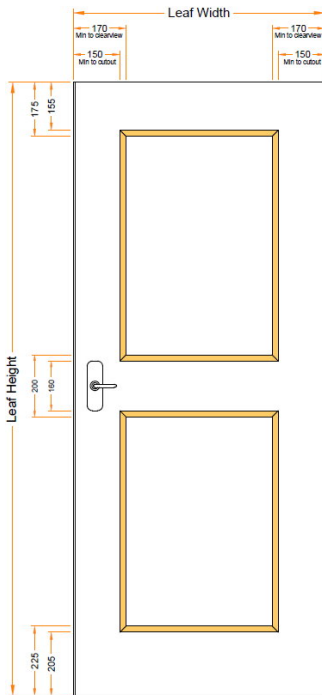
**Aluminium (surcharge applies)**



**GLAZING OPTIONS**

All options use 10.38 mm laminated glass. In addition to the standard options shown below, we offer bespoke designs that are available on request from our sales team. The maximum panel size is subject to minimum clearances.

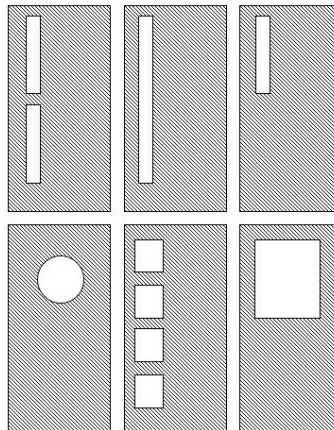
**Placement dimensions**



**Glass types & size limitations**

APPROVED GLASS & CLEARVIEW SIZES				
Rating	Glass	Max Height	Max Width	Max Area
NFR	10.38	2250	860	1.935 m <sup>2</sup>
-/30/-	Pyro 15	2250	860	1.935 m <sup>2</sup>
-/30/30	Pyro 15	2250	860	1.935 m <sup>2</sup>
-/60/-	Pyro 15	1830	610	0.92 m <sup>2</sup>
-/60/30	Pyro 15	1830	610	0.92 m <sup>2</sup>
-/60/60	Pyro 15	650	100	0.065 m <sup>2</sup>
-/60/60	Pyro 23	1700	300	0.51 m <sup>2</sup>
-/60/60	Pyro 23	450	450	0.2 m <sup>2</sup>
E-/60/30	Pyro 15	814	504	0.41 m <sup>2</sup>
-/240/30	Robax 6mm	600	100	0.06 m <sup>2</sup>
-/240/-	Robax 6mm	750	150	0.11 m <sup>2</sup>

**Some possible design idea's**

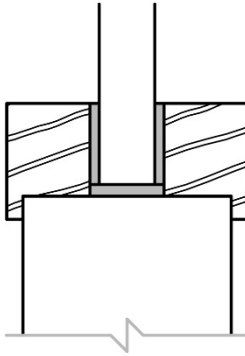


## GLAZING BEAD OPTIONS

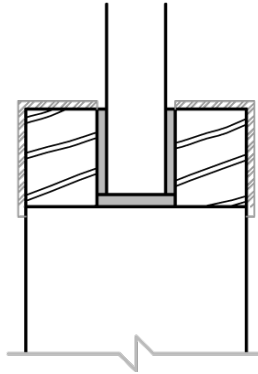
### Square (standard)

- No additional charge
- Includes optional aluminium overcap

#### Square Bead with Lip



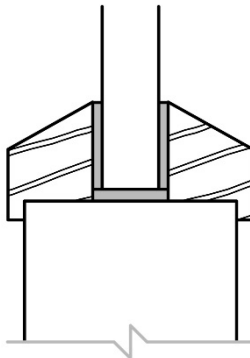
#### Aluminium Bead



### Bevel (previous standard)

- Optional
- No aluminium cap option

#### Bevel Bead with Lip



## HARDWARE

We can supply these units with or without hardware. With pre-cropped doors any hardware supplied will be unfitted. Any standard hardware is suitable for these non-fire door units.