

Data sheet



I-30-H: Interior 30 minute FRR hung door, single or pair

Our most popular 30 minute FRR interior fire, smoke and acoustic door set, the I-30-H is available in singles or pairs. The door leaf is a solid composite timber core faced with an integral MDF layer (S-CORE). The standard door set is supplied pre-primed on both faces, as well as top and bottom, or you can specify a facing and/or kickplate.

- Leaf sizes up to 2650 high x 1200 wide per leaf (Overheight doors may be available, please call 09 579-8895 to discuss)
- Thickness 44 mm
- Weight 19.8 kg /m²
- Acoustic singles and doubles STC 33 unglazed STC 36 glazed

FACING OPTIONS

- Paint quality factory pre-primed
- Timber veneer full height
- High pressure laminate full height
- Sheet vinyl to 1000 mm
- 1 mm galvanised steel facings to 1000 mm with aluminium edge capping full height
- 1 mm stainless steel kickplate to 1000 mm – both sides

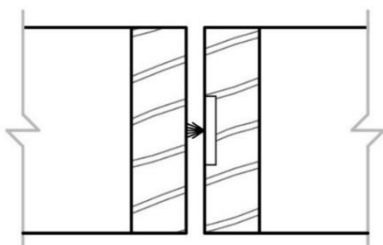
LEAF EDGE DETAILS

- 6 mm pine clashing to hinge edge (timber jamb)
- 6 mm pine clashing to leading edge of singles (timber jambs)
- 12 mm pine clashing to hinge edge (steel jamb)
- 12 mm pine clashing to leading edge of singles (steel jambs)
- 12 mm pine clashing to leading edge of flush pairs
- 18 mm pine clashing to leading edge of rebated pairs

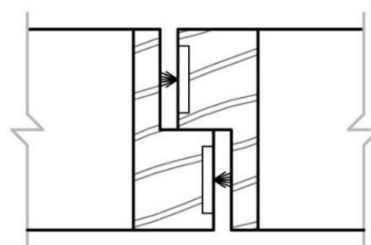
PAIR MEETING STYLES

Timber (the standard option)

Flush

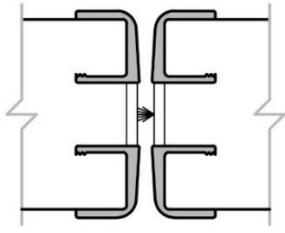


Rebated

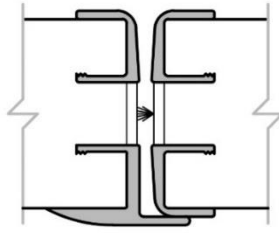


Aluminium (surcharge applies)

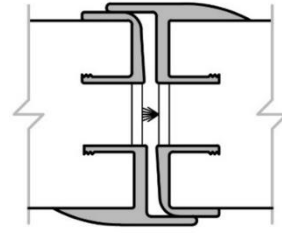
Bullnose C/C



Bullnose C/J



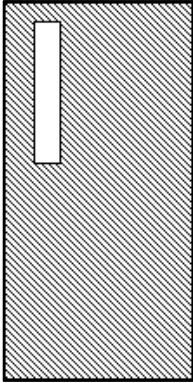
Bullnose J/J



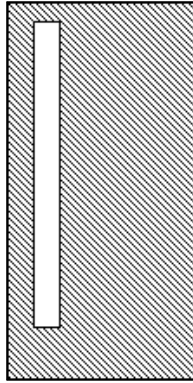
GLAZING OPTIONS

Pyro 15 mm fire glass is used for all options. In addition to the standard options shown below, we offer bespoke designs that are available on request from our sales team. The maximum panel size is .852 m² (max 1550 h x max 550 w), subject to minimum clearances.

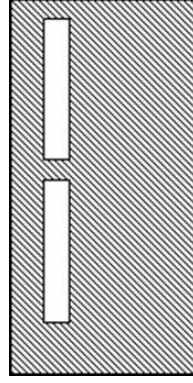
VP1



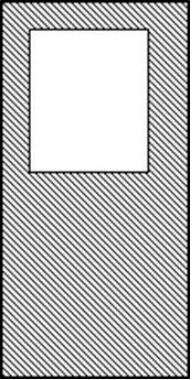
VP2



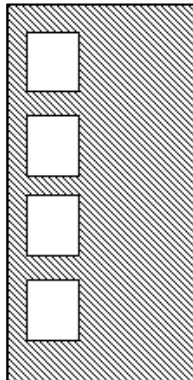
VP3



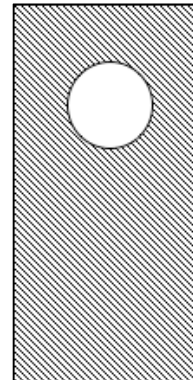
VP4



VP5



VP6

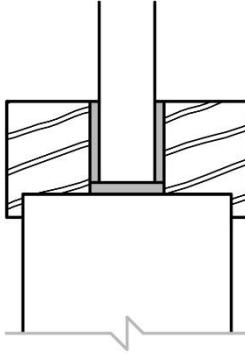


GLAZING BEAD OPTIONS

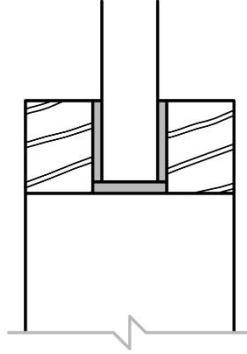
Square (standard)

- No additional charge
- Includes optional aluminium overcap

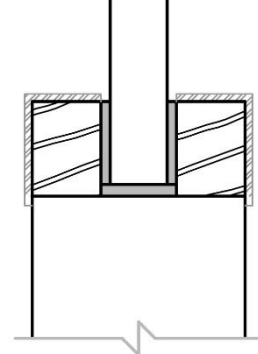
Square Bead with Lip



Square Bead with No Lip



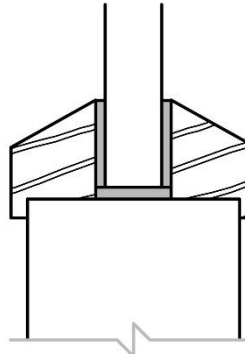
Aluminium Bead



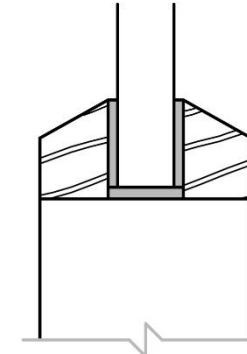
Bevel (previous standard)

- Optional
- No aluminium cap option

Bevel Bead with Lip



Bevel Bead with No Lip

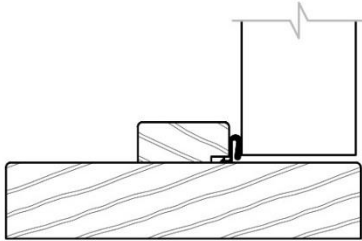


JAMB TYPES AND PROFILES

32 mm hardwood timber (types 1, 2 & 3)
or 1.6 mm electrogalv steel (types 5, 6, 7 & Speedwall), paint quality or powdercoat options available

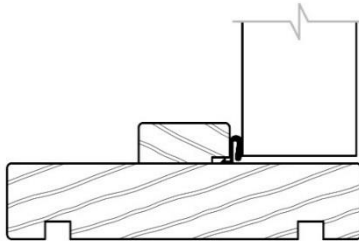
T1 - Timber

Timber width 80 – 350 mm



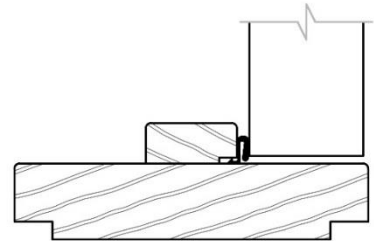
T2 - Timber

Groove for wall lining to suit



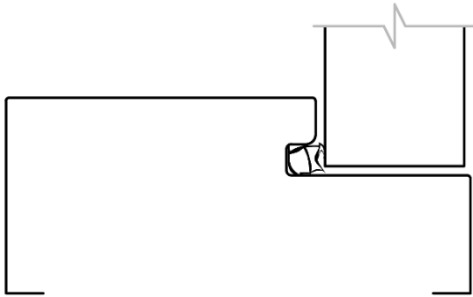
T3 - Timber

Rebate for wall lining to suit (non-standard surcharge may apply)

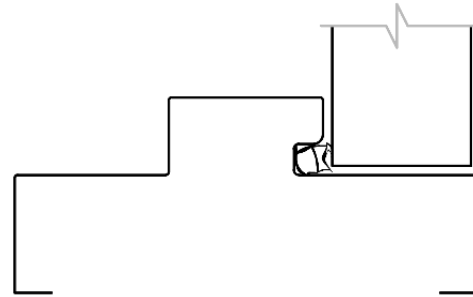


T5 - Steel

Steel width 100 – 350 mm

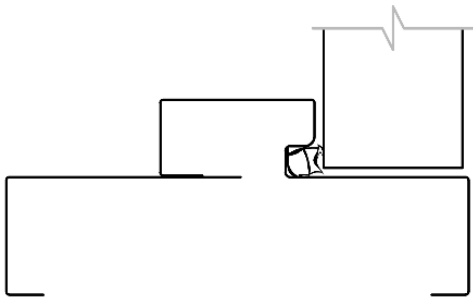


T6 - Steel

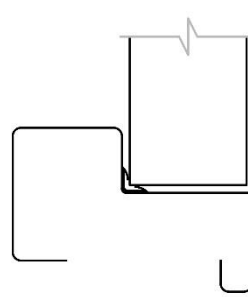


T7 - two piece split steel

Ideal for retrofit situations. No additional charge over single-piece steel jamb.

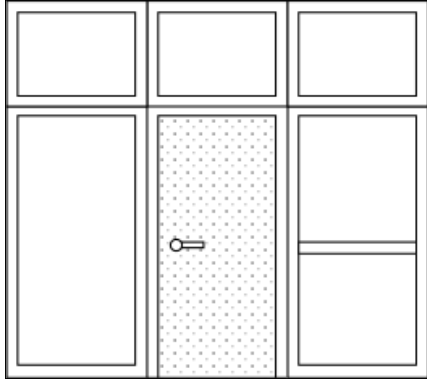


Steel Speedwall



SIDELIGHTS AND OVERLIGHTS

The I-30-H is available in a range of sidelight and overlight combinations that are generally made to order. If you require a sidelight or overlight, please contact a member of our sales team to discuss and confirm specific design and pricing details.



- Max overall combined height 3000 mm
- 45 mm timbers throughout.
- No limit to overall width.
- Each module is limited by weight, transport and on site handling capabilities.
- Max door height 2650 mm
- Sidelights with optional mid rail – consider manifestation needs

APPROVED HARDWARE

The minimum requirement is for a fire door to be self-closing and self-latching. Hardware must be selected from NZ Fire Doors' Approved Hardware list from the column '30 min'. Fitting any hardware that inhibits self-closing or self-latching is not approved by NZS 4520

IMPORTANT: Fitting untested or inappropriate hardware may affect the performance of the door and will void the warranty.

See technical compliance statement